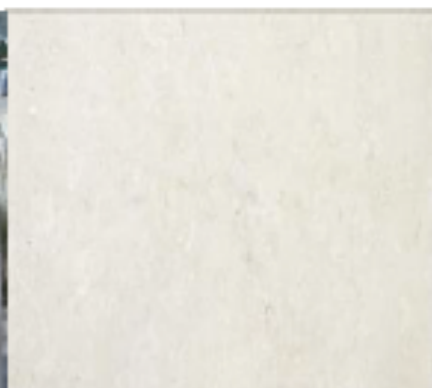
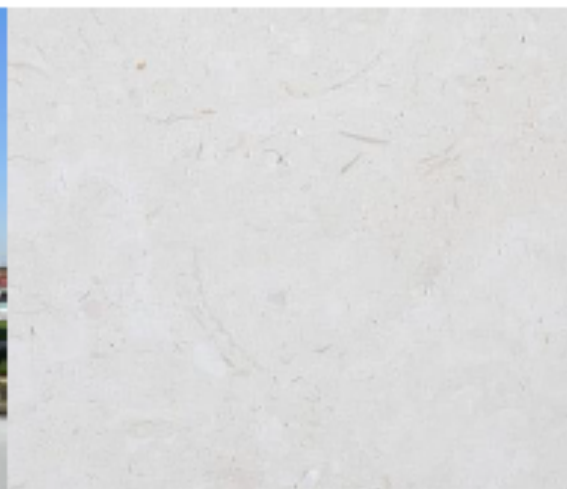


CALIZA LUGA



TEST METHODS	RESULTS
Flexural Strength	<i>Mean Value 6,7 Mpa</i>
Water Absorption	<i>Mean Value 0,51%</i>
Apparent Resistance	<i>Mean Value of Apparent Resistance 2.080 Kq / m3</i>
Compression Resistance	<i>Mean Value of Compression Resistance 160 MPa</i>
Hardness	<i>Mean Value 151,0 Micras</i>
Absorption by Capillarity	<i>Standard Value 0,051 kg / m2xh1/2</i>