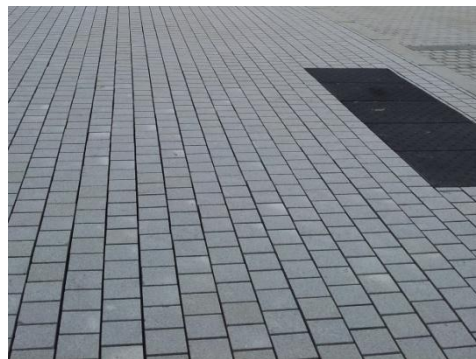


## MARGA GREY GRANITE



TEST METHODS	RESULTS
Petrographic Examination (UNE-EN 12407:2001)	<b>Granite</b>
Water Absorption (UNE-EN 13755:2008)	<b>Mean Value 0,3%</b>
Apparent Density and Open Porosity (UNE-EN 1936:2007)	<b>Mean Value of Apparent Density 2.630 Kgs /m3 Mean Value of Open Porosity 0,9%</b>
Compressive Strength (UNE-EN 772-1:2002)	<b>Mean Value of Compressive Strength 189,5 MPa</b>
Flexural Strength (UNE-EN 12372:2007)	<b>Mean Value of Flexural Strength 16,6 MPa</b>
Frost Resistance (UNE-EN 12371:2002)	<b>Mean Value of Compressive Strength after 48 cycles 169 MPa</b>